



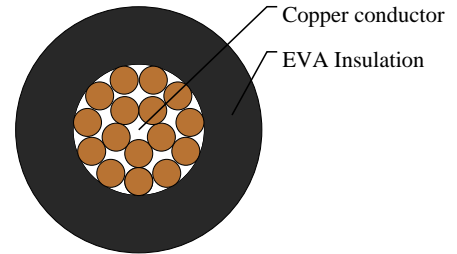
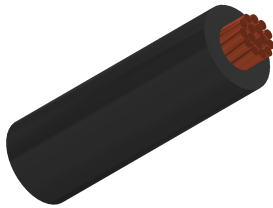
Caledonian

Automotive Cables

www.caledonian-cables.com

marketing@caledonian-cables.com

FL4G



APPLICATIONS

This EVA insulated single-core cable is used for cable harnesses.

STANDARDS

ISO 6722 Class D

CABLE CONSTRUCTION

Conductor: Cu-ETP1 bare or tinned according to DIN EN13602

Insulation: Cross-linked ethylene/vinylacetate insulation(EVA)

PHYSICAL AND THERMAL PROPERTIES

Operating temperature: -40°C to 140°C

DIMENSION AND PARAMETERS

No. of Cores × Cross-sectional Area	No. and Dia. of Wires	Diameter of Conductor (max.)	Nominal Insulation Thickness	Approx. Overall Diameter	Approx. Weight	Max. Conductor Resistance at 20 °C
No. × mm ²	no./mm	mm	mm	mm	kg/km	MΩ × km
1 × 0.50	16/0.21	1.10	0.48	2.3	9	38.20